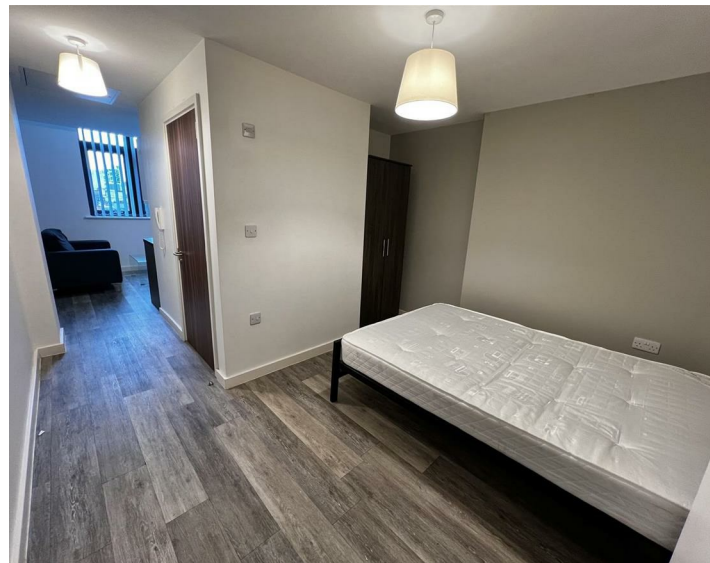




Apt 53 4 Leigh Street, Liverpool, L1 1NT  
£725 Per Month

www.  
cityresidential  
.co.uk



## About the Property

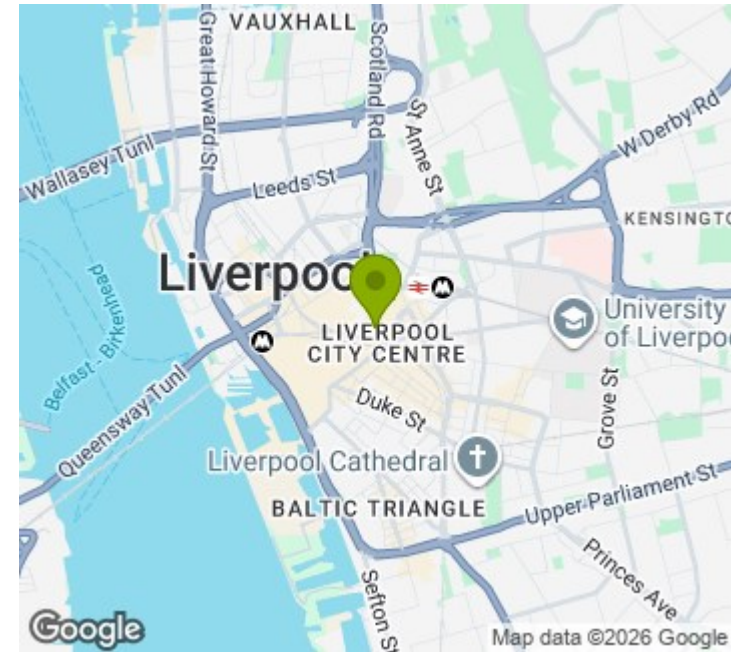
Available to Let is this well presented fifth floor, studio apartment in the heart of Liverpool City Centre.

Situated on Leigh Street, it is ideally located for all the amenities the city centre has to offer and is just a short walk from both Liverpool Central and Liverpool Lime Street Stations. The accommodation further benefits from double glazing and integrated white goods in the kitchen.

This development is serviced by a lift to all floors. There is no parking available with this apartment.

EPC Rating - C. Council Tax Band - A. A deposit amount of £836.00 is payable upon moving in. Call us now on 0151 231 6100 to arrange a viewing.

- EPC Rating - C
- Council Tax Band - A
- Deposit - £836
- Studio Apartment
- Available Now
- Call 0151 231 6100 to arrange a viewing



## Energy Efficiency Rating

	Current	Potential
Very energy efficient - lower running costs		
(92 plus) <b>A</b>		
(81-91) <b>B</b>		
(69-80) <b>C</b>	<b>70</b>	<b>70</b>
(55-68) <b>D</b>		
(39-54) <b>E</b>		
(21-38) <b>F</b>		
(1-20) <b>G</b>		
Not energy efficient - higher running costs		
<b>England &amp; Wales</b>	EU Directive 2002/91/EC	



City Residential

81/87 Victoria Street, The Old Haymarket, Liverpool L1 6DG

T: 0151 231 6100 F: 0151 231 6105

E: sales@cityresidential.co.uk



WWW.  
**cityresidential**  
.co.uk